

# MONTHLY MEMBERSHIP PROGRESS REPORT

District 14 M

Results as of: 3/31/2026

GMT:

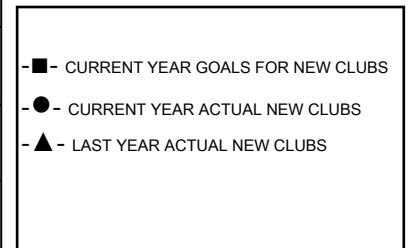
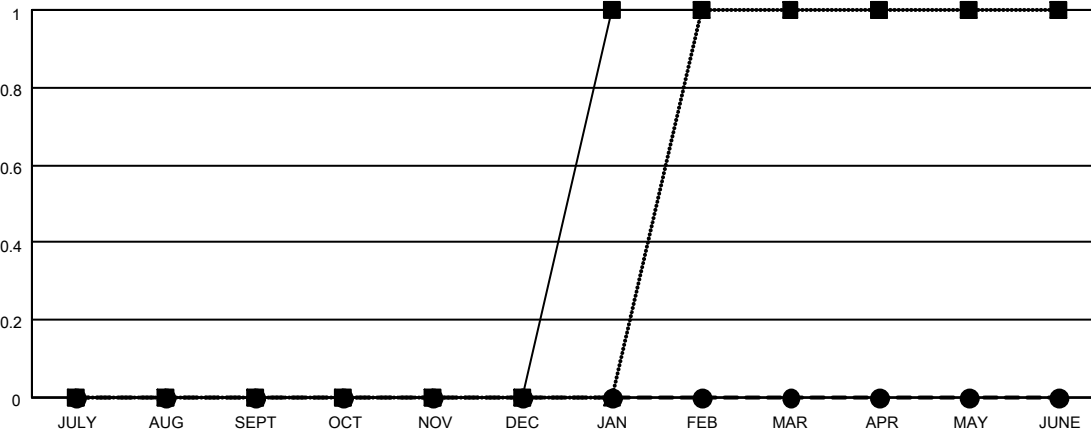
LOCATION PENNSYLVANIA

GMT CA

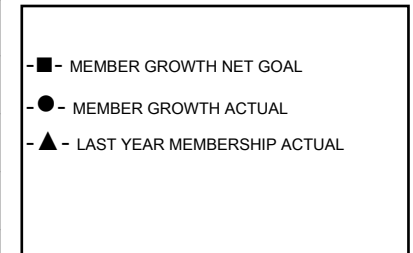
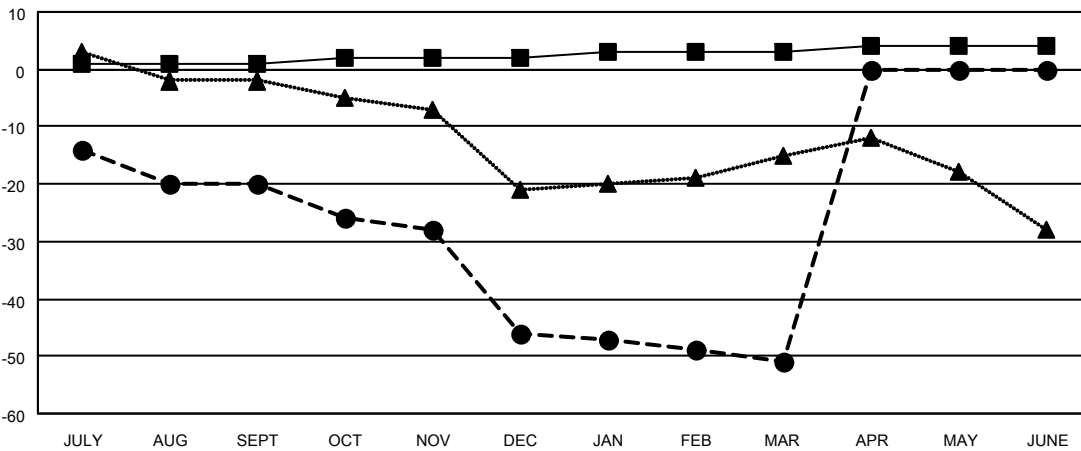
Clubs			
RESULTS FOR 2025-2026			
QUARTER	NEW CLUB GOAL	NEW CLUBS	DROPPED CLUBS
JULY/AUG/SEPT	0	0	0
OCT/NOV/DEC	0	0	0
JAN/FEB/MAR	1	0	1
APR/MAY/JUNE	0	0	0

Members			
RESULTS FOR 2025-2026			
QUARTER	MEMBER GROWTH NET GOAL	MEMBER GROWTH ACTUAL	DROPPED MEMBERS ACTUAL (including transfers)
JULY/AUG/SEPT	1	19	27
OCT/NOV/DEC	1	7	33
JAN/FEB/MAR	1	18	23
APR/MAY/JUNE	1	0	0

GOALS AND ACTUAL NEW CLUBS CUMULATIVE



GOALS AND ACTUAL MEMBERS CUMULATIVE



DROPPED CLUBS: 1  DROPPED MEMBERS DECEASED 12 CLUB CANCELLED 9 OTHER 62 TOTAL 83	17 CLUBS OF 41 ADDED 1 OR MORE NEW MEMBERS	<b>GENDER DISTRIBUTION</b> MALE 582 (61.85%) FEMALE 354 (37.62%)
	<a href="#">CLICK HERE FOR CUMULATIVE MEMBERSHIP DATA</a>	TOTAL FAMILY UNIT MEMBERS 196 FAMILY MEMBERS PAYING HALF DUES 105